



FRED ASTAIRE
DANCE STUDIOS

M3 ENTERTAINMENT PRESENTS

LONESTAR DANCE



JUNE 17TH

JUNE 19TH

CHALLENGE

WESTIN MEMORIAL CITY
945 GESSNER RD | HOUSTON | TX | 77024



LDC LONESTAR
DANCE CHALLENGE





Table of Contents

1**Hotel**

Location, Booking Information, &
Deadlines
Page 3

2**Tentative Schedule**

Event Room Location and Daily
Schedule of Events
Page 4

3**2021 Packages**

Breakdown of Packages & Items
Included
Page 10

4**Fees, Incentives & Points**

Details of Fees, Incentives & Points
for Studios & Teachers
Page 11

5**Descriptions**

Competition Event Package
Descriptions
Page 14

6**Point System**

Breakdown of Points for Each
Division
Page 16

7**Professional Divisions**

Descriptions of Professional
Divisions
Page 18

8**Deadlines & Cancellations**

Deadline & Cancellation Terms and
Conditions
Page 22

01

The Westin Houston, Memorial City

Thursday, June 17 - Saturday, June 19

Venue Location:

945 Gessner Road
Houston, Texas 77024
(281) 501-4300

Hotel Room Rate Per Night

(Single or Double Rates)

Traditional Single \$112 and Double \$122 + tax

Call Hotel and give them the FADS name for special rate

HOTEL LINK

Room Deadline Thursday, May 27, 2021

02

Tentative Schedule

| Check Points | Location |
|-------------------------------|---------------|
| Registration & Concierge Desk | |
| Main Ballroom | |
| Thursday Shownight | |
| Ladies' Dressing | |
| Men's Dressing | |
| Practice Room | |
| Breakfast: Friday & Saturday | |
| Lunch: Friday & Saturday | Main Ballroom |
| Dinner: Friday | |
| VIP Party | |
| New Competitor Orientation | Main Ballroom |
| Master Class | |
| Audition Room | |

THURSDAY

| TIME | EVENT | LOCATION |
|----------------|---|----------|
| 3:00 PM | Registration Opens | |
| 3:30 - 5:00 PM | Master Class Workshops - Vladimir Kosarev & Vera Chervin | |
| 7:00 PM | Competition Session 1 | |
| | Performance Division: Solos, Novelties, Showcases, Formations | |
| 9:00 PM | Professional Competition Part 1 | |
| | Closed Rhythm & Smooth, Closed Latin & Ballroom, Professional Formation, Professional Showdance, Solo Closed Rhythm | |
| 12:00 AM | Professional Awards | |

FRIDAY

| TIME | EVENT | LOCATION |
|----------------|--|----------|
| 4:00 AM | Dressing Rooms open for Hair & Make-Up | |
| 7:00 AM | Registration Opens Scrutineer available for changes | |
| 7:00 - 8:30 AM | Breakfast | |
| 7:30 AM | New Competitor Orientation with Regional Dance Directors | |
| 8:00 AM | Competition Session 2 | |
| | All Standard Divisions All Smooth Divisions | |
| 12:00 PM | Lunch | |
| | All Standard & Smooth Scholarships/Championships | |
| 6:00 PM | Competition Session 2 Ends | |
| | Friday Night Dinner | |
| 7:00 PM | Competition Session 3 Nightclub "80s Rock" | |
| | All Nightclub Entries Awards for Championship Winners: C&W, Latin, Nightclub | |
| 9:30 PM | Professional Competition Part 2 | |
| | Professional Nightclub, Novice, Pre-Champ and All Open Divisions | |
| | Awards for Professional Division | |
| 10:45 AM | Competition Session 3 Ends | |

SATURDAY

| TIME | EVENT | LOCATION |
|----------------|---|----------|
| 4:00 AM | Dressing Rooms open for Hair & Make-Up | |
| 7:00 AM | Registration Opens Scrutineer available for changes | |
| 7:00 - 8:00 AM | Breakfast | |
| 7:30 AM | New Competitor Orientation with Regional Dance Directors | |
| 8:00 AM | Competition Session 4 | |
| | All Rhythm Division All Latin Divisions | |
| 12:00 PM | Lunch | |
| | All Rhythm & Latin Scholarships/Championships | |
| 6:00 PM | Competition Session 4 Ends | |
| 7:30 PM | "Bulls and Barrels" Banquet | |

BANQUET

| TIME | EVENT |
|------------------|--|
| 7:30 - 7:40 PM | Doors Open |
| 7:40 - 8:00 PM | General Dancing Band Plays |
| 8:00 - 9:00 PM | Dinner |
| 8:15 - 8:30 PM | Top Student Awards TGC |
| | Solo, Novelty, Showcase, Virtual, JR, Newcomer Female & Male, Bronze Female & Male, Silver Female & Male, Gold Female & Male, International, Top Overall Couple, Top Nightclub Student, Top Nightclub Amateur Couple |
| 8:30 - 8:45 PM | General Dancing Band Plays |
| 8:45 - 9:00 PM | Top Teacher Awards |
| | Top Female: 4th, 3rd, 2nd, & Top Top Male: 4th, 3rd, 2nd, & Top |
| 9:00 - 9:20 PM | General Dancing Band Plays |
| 9:20 - 9:30 PM | Top Studio Awards |
| | Spirit, Top Studio Runner-Up, Top Studio, Best Dressed |
| 9:30 - 9:50 PM | General Dancing Band Plays |
| 9:50 - 10:20 PM | Show Time |
| 10:20 - 10:30 PM | Closing Line Dance |

03

2021 Packages

CONFIDENTIAL STUDIO PRICES

DUE DATE May 20, 2021

| | VIP | ONE DAY FRIDAY | ONE DAY SATURDAY | SHOW | NIGHT CLUB | FIRST TIMER FRIDAY | FIRST TIMER SATURDAY | FRIDAY COMP ONLY | SATURDAY COMP ONLY |
|--|-------|-------------------|---------------------|------|---------------|--------------------------|----------------------------|------------------------|--------------------------|
| PRICES - Students | \$599 | \$320 | \$345 | \$25 | \$25 | \$100 | \$100 | \$199 | \$199 |
| PRICES - Teacher | \$599 | \$245 | \$270 | \$25 | \$25 | \$75 | \$75 | \$125 | \$125 |
| | | | | | | | | | |
| VIP | X | | | | | | | | |
| PARTICIPATION GIFT | X | X | X | | | | | | |
| | | | | | | | | | |
| THURSDAY EVENING SESSION 1 | X | | | X | | | | | |
| THURSDAY EVENING PRO COMP | X | | | X | | | | | |
| | | | | | | | | | |
| FRIDAY BREAKFAST | X | X | | | | | | | |
| FRIDAY LUNCH | X | X | | | | X | | X | |
| FRIDAY SESSION 2 | X | X | | | | | | X | |
| FRIDAY NIGHT DRINK TICKETS - 1 | X | X | | | | | | | |
| FRIDAY BUFFET DINNER | X | X | | | | | | | |
| FRIDAY NIGHT - NIGHTCLUB SESSION 3 | X | X | | | X | | | | |
| FRIDAY EVENING PRO COMP | X | X | | | | | | | |
| | | | | | | | | | |
| SATURDAY BREAKFAST | X | | X | | | | | | |
| SATURDAY SESSION 4 | X | | X | | | | | | X |
| SATURDAY LUNCH | X | | X | | | | X | | X |
| VIP COCKTAIL PARTY | X | | | | | | | | |
| VIP DRINK TICKETS - 1 | X | | | | | | | | |
| SATURDAY BANQUET - INC 1 DRINK TICEKT | X | | X | | | | | | |
| SATURDAY PRO SHOW | X | | X | | | | | | |

- Friday Day Session Ticket: \$20
- Friday Nightclub Session Ticket: \$25
- Saturday Day Session Ticket: \$20
- Saturday Night Banquet Individual Ticket:

04

Fees

Entry Deadline: Thursday, May 20, 2021

All entries must be inputted at texasfadscomps.com or emailed to bseifert@fredastaire.com by the deadline above.

Additional Entry Submission Deadline: Friday, June 4, 2021

Any new entries submitted after date above will be assessed an additional \$5.00 fee pre entry.

| ENTRY | FEE |
|---|-------------------------------------|
| First Timer Entry | \$25 |
| Adult Single Dance Entry | \$41 |
| PT-JR-Youth Single Dance Entry (This rate is only for JR single dance entries) | \$20 |
| Multi Dance 3-Dance | \$115 |
| Multi Dance 4-Dance | \$130 |
| Multi Dance 5-Dance | \$140 |
| Multi Dance 6-Dance | \$200 |
| Multi Dance 9-Dance | \$250 |
| Multi Scholarships 3-Dance | \$135 |
| Multi Scholarships 4-Dance | \$145 |
| Multi Scholarships 5-Dance | \$155 |
| Solo & Novelty | \$125 |
| Showcase | \$135 |
| Professional Entry ((\$25 per Lady & \$25 per Gentleman per division will be waived for professional with more than 70 entries per Pro) | \$50 ((\$25 per Solo Star Entry) |

Incentives

STUDIO

Submission Date to Qualify: Thursday, May 20, 2021

Payment Date to Qualify: Tuesday, May 25, 2021

All entries must be submitted and paid in full by the Qualifying deadline dates above in order to be eligible for rebates.

Entries

Any studio with the below total entry count will qualify for a reimbursement check after the entries are danced and the competition is complete. Entries transferred to another event do not qualify towards the total.

| |
|---|
| 450 - 550 Entries save \$1.00 per Entry |
| 551 - 800 Entries save \$2.00 per Entry |
| 801 plus Entries save \$3.00 per Entry |

Studio Spirit Award

Winner will be determined by judging panel. Most upbeat and active studio during the weekend demonstrating best customer service.

Studio Incentive: Award

TEACHER

Overall Top Teacher

Qualifying teacher must be on a Full VIP Package and have a minimum of 75 Entries danced with a Minimum of one Full VIP Package Student. Incentives given to placements 1-4. Male and Female category.

| |
|---|
| \$3,500 proportionately divided amongst winners (minimum 3,000 total comp entries) |
| \$2,500 proportionately divided amongst winners (minimum 2,500 total comp entries) |
| \$2,000 proportionately divided amongst winners (minimum 2,000 total comp entries) |
| \$1,500 proportionately divided amongst winners (if under 1,999 total comp entries) |

*see point calculation in Point Section below

Top Teacher Add On Category

Incentive given to the Top Teacher in this Division with a minimum of 75 entries danced in that division.

Teacher Incentive: \$250

Categories: Pro/Am International Ballroom, Pro/Am International Latin and Pro/Am Nightclub.

PROFESSIONAL DIVISION SPONSORSHIP PROGRAM

Professional Division Sponsorship Form

Please use the link below to visit the Professional Division Sponsorship Program Google Form

[SPONSORSHIP FORM LINK](#)

| Sponsorship Cost | \$500 | \$750 | \$1,500 | \$3,000 & Above |
|-----------------------|-------|-------|---------|-----------------|
| Teacher Incentive | \$100 | \$250 | \$500 | \$1,000 |
| Professional Category | \$300 | \$375 | \$750 | \$1,500 |
| Staff Party | \$100 | \$125 | \$250 | \$500 |

Student Incentive: Recognition during Professional Events. Presentation of Award for Professional Division Sponsored. Picture and name recognition on video screen during weekend if video screen is provided.

Professional Category money is divided as follows:

- 3 Couple Min (1st 50%, 2nd 30%, 3rd 20%)
- 2 Couple Min (1st 60%, 2nd 40%)

Artwork Deadline: Friday, June 4, 2021

Artwork for screens must be submitted the date above to texas@fredastairecom.

PROFESSIONAL MONETARY INCENTIVE

Minimum of 3 couples entered per division. If only 2 couples are entered, 2nd and 3rd place prize money will be awarded. If only 1 couple is entered, 1 honor dance will be offered with no prize money awarded.

| CLOSED DIVISIONS | |
|------------------|---------------------|
| 1st Place | \$350.00 per Couple |
| 2nd Place | \$200.00 per Couple |
| 3rd Place | \$100.00 per Couple |
| OPEN DIVISIONS | |
| 1st Place | \$600.00 per Couple |
| 2nd Place | \$400.00 per Couple |
| 3rd Place | \$250.00 per Couple |

* Closed Divisions also include Novice, Pre-Champ and Nightclub. Solo Star Division are 50% of the Open and Closed Prize money.

05

Descriptions

FIRST TIMER DIVISION

First Timer division is for any student that has not danced more than 15 entries at any competition and has not participated on a First Timer package more than two times. (Regional, National, Inter-Regional, Independent). Participation is counted as an individual.

| | |
|------------------------------------|--|
| Student Competition Fee PER DAY | \$100 (Includes lunch for that day, NO BREAKFAST) |
| Teacher Competition Fee PER DAY | \$75 (Includes lunch for that day, NO BREAKFAST) |
| Entry Fee | \$25 per single dance entry |
| Attire | Black Practice Attire or Competition Costume |

COMP ONLY DIVISION

Students can compete both Friday and Saturday with doing a competitor fee for each day.

- The fee is \$199 per day this includes admission into the ballroom and lunch. Suggested retail rate \$299. (NOTE: This is a Multi-Student Price)
- Teachers, as well, can compete on all days with the Teacher's Competitor fee. The fee is \$125 per day for Friday and Saturday, this covers the admission, lunch and ability to compete Pro/Am.

NON-COMPETING PACKAGES

Any Non-Competing Person (Spouse, Family etc.) wanting to attend can purchase the following:

- Non-Competing VIP Package: \$500 (Suggested retail price \$550-\$750)
- VIP Spouse Ticket: \$75 per person (Suggested retail price \$99 per person)

NIGHTCLUB COMPETITION

| | Single Dances Offered | Latin Championship | C & W Championship | Disco Championship |
|------------------|--------------------------|-----------------------|-----------------------|-----------------------|
| CW Waltz | ✓ | | ✓ | |
| CW 2-Step | ✓ | | ✓ | |
| CW EC Swing | ✓ | | | |
| CW WC Hustle | ✓ | | | |
| CW Polka | ✓ | | ✓ | |
| Salsa | ✓ | ✓ | | |
| Merengue | ✓ | ✓ | | |
| Bachata | ✓ | ✓ | | |
| Hustle | ✓ | | | ✓ |
| Argentine Tango | ✓ | | | |
| West Coast Swing | ✓ | | | ✓ |
| Swing | ✓ | | | ✓ |

Note: Open to competitors of all levels.

06

Point System

ENTRIES PAID & DANCED

Points for all entry fees paid and danced.
All entries (all single dances & multi-dance events)

15 points for Nationals

10 points for Regionals

5 points for Inter-Regionals

PLACEMENT POINTS SINGLE DANCE ENTRIES

National, Regional and Inter-Regional Events:

- 10 points per round danced will be awarded at Nationals, Regionals, and Inter-Regional events.
- One-Half points will be given in Proficiency Entries danced at Nationals, Regionals, and Inter-Regionals.

| | |
|-----|----------|
| 1st | 8 points |
| 2nd | 7 points |
| 3rd | 6 points |
| 4th | 5 points |
| 5th | 4 points |
| 6th | 3 points |
| 7th | 2 points |
| 8th | 1 point |

PARTICIPATION SHOW POINTS

17

Solo, Novelty, Showcase, Pro-Am Formation

10 points for Regionals

5 points for Inter-Regionals

PRO/AM MULTI DANCE EVENT POINTS

(3, 6, 9 DANCE EVENTS)

| | |
|-----|-----------|
| 1st | 40 points |
| 2nd | 30 points |
| 3rd | 30 points |
| 4th | 25 points |
| 5th | 20 points |
| 6th | 15 points |
| 7th | 10 points |
| 8th | 5 points |

10 points per Round Danced will be Awarded at Nationals, Regionals and Inter-Regional Events.

PROFESSIONAL DIVISIONS

*All points will be awarded to both partners in a professional couple.

*10 points will be awarded to both partners per round danced.

10 points for Regionals

5 points for Inter-Regionals

Nationals, Regionals, Inter-Regionals:
All contested Professional Divisions

| | |
|-----|-----------|
| 1st | 80 points |
| 2nd | 70 points |
| 3rd | 60 points |
| 4th | 50 points |
| 5th | 40 points |
| 6th | 30 points |
| 7th | 20 points |
| 8th | 10 points |

07

Professional Divisions

PROFESSIONAL AMERICAN STYLE NOVICE DIVISION

For professional couples who have been teaching or dancing ballroom for 18 months or less in any system. This is a closed division and couples may dance up through full bronze.

PROFESSIONAL AMERICAN STYLE PRE-CHAMP CLOSED DIVISION

For professional couples where at least one of the partners has been teaching for 18 months or less by the date of the entry in any system. This is a closed division and competitors may dance up through silver.

PROFESSIONAL NIGHTCLUB DIVISION

For professional couples of any level. The purpose of this division is to promote and enjoy minor and trend dances. To demonstrate the fun and excitement these dances can bring out in a dancer. This division is for professionals to have fun and be creative. Open and closed material allowed. No lift of any sort allowed.

**PROFESSIONAL AMERICAN
SMOOTH BRONZE & SILVER CLOSED**

Open to all professional couples. This is a closed division and competitors may dance up through silver. Patterns must be danced in their entirety.

**PROFESSIONAL AMERICAN
SMOOTH OPEN DIVISION**

Open to all professional couples. Competitors are not restricted with choice of material in this division, with the exception of lifts.

**PROFESSIONAL AMERICAN
RHYTHM BRONZE & SILVER CLOSED**

Open to all professional couples. This is a closed division and all competitors may dance up through silver. Patterns must be danced in their entirety.

**PROFESSIONAL AMERICAN
RHYTHM OPEN DIVISION**

Open to all professional couples. Competitors are not restricted with choice of material in this division, with the exception of lifts.

**PROFESSIONAL INTERNATIONAL
BALLROOM CLOSED**

Open to all professional couples. This is a closed division and competitors may dance up through silver. Patterns must be danced in their entirety.

**PROFESSIONAL INTERNATIONAL
BALLROOM OPEN DIVISION**

Open to all professional couples. Competitors are not restricted with choice of material in this division, with the exception of lifts.

**PROFESSIONAL INTERNATIONAL
LATIN CLOSED DIVISION**

Open to all professional couples. This is a closed division and all competitors may dance up through silver. Patterns must be danced in their entirety.

**PROFESSIONAL INTERNATIONAL
LATIN OPEN DIVISION**

Open to all professional couples. Competitors are not restricted with choice of material in this division, with the exception of lifts.

**PROFESSIONAL AMERICAN RHYTHM
SOLO BRONZE & SILVER CLOSED**

This is a closed division, and all competitors may dance up through silver. Patterns must be danced in their entirety. Open to all single professionals. All dances will be danced Solo, male and female mixed.

**PROFESSIONAL AMERICAN
SMOOTH SOLO OPEN DIVISION**

Competitors are not restricted with choice of material in this division. Open to all single professionals. All dances will be danced Solo, male and female mixed.

**PROFESSIONAL OPEN
SHOWDANCE DIVISION**

Open to all professional couples. Competitors are not restricted with choice of material in this division, lifts are allowed with a min of 1 lift required. All routines must be performed within four minutes including walk on walk off. The music must be on a flash drive. Pros are responsible for their own music formats.

**PROFESSIONAL STUDIO
FORMATION DIVISION**

This division is open to all studios and must have a minimum of three professionals to perform. This division will be danced on Thursday night in Session #1 Performance Showcase. All material and lifts are permitted with a maximum of 4 minute walk on walk off time.

| Division | Dances | Day of Event |
|--|--|--------------|
| American Smooth Bronze & Silver Closed | Waltz, Tango, Foxtrot, Viennese Waltz | Thursday |
| American Rhythm Solo Bronze & Silver Closed | Cha Cha, Rumba | Thursday |
| American Rhythm Bronze & Silver Closed | Cha Cha, Rumba, Swing, Bolero, Mambo | Thursday |
| International Ballroom Closed | Waltz, Tango, Viennese Waltz, Slow Foxtrot, Quickstep | Thursday |
| International Latin Closed | Cha Cha, Samba, Rumba, Paso Doble, Jive | Thursday |
| Open Showdance | | Thursday |
| Pre-Champ Closed | Viennese Waltz, Rumba, Open Cha Cha | Thursday |
| Studio Formation | | Thursday |
| American Smooth Open | Waltz, Tango, Foxtrot, Viennese Waltz | Friday |
| American Rhythm Open | Cha Cha, Rumba, Swing, Bolero, Mambo | Friday |
| American Smooth Solo Open | Waltz, Tango | Friday |
| International Ballroom Open | Waltz, Tango, Viennese Waltz, Slow Foxtrot, Quickstep | Friday |
| International Latin Open | Cha Cha, Samba, Rumba, Paso Doble, Jive | Friday |
| Nightclub | Polka, W. Coast Swing, Salsa, Bachata | Friday |
| Novice | Tango, Rumba | Friday |

08

Deadlines & Cancellation Policies

DEADLINE FOR ALL PACKAGES AND ENTRIES TO
RECEIVE STUDIO KICKBACK INCENTIVE
>>>THURSDAY, MAY 20, 2021<<<

ENTRY DEADLINE: MAY 20, 2021

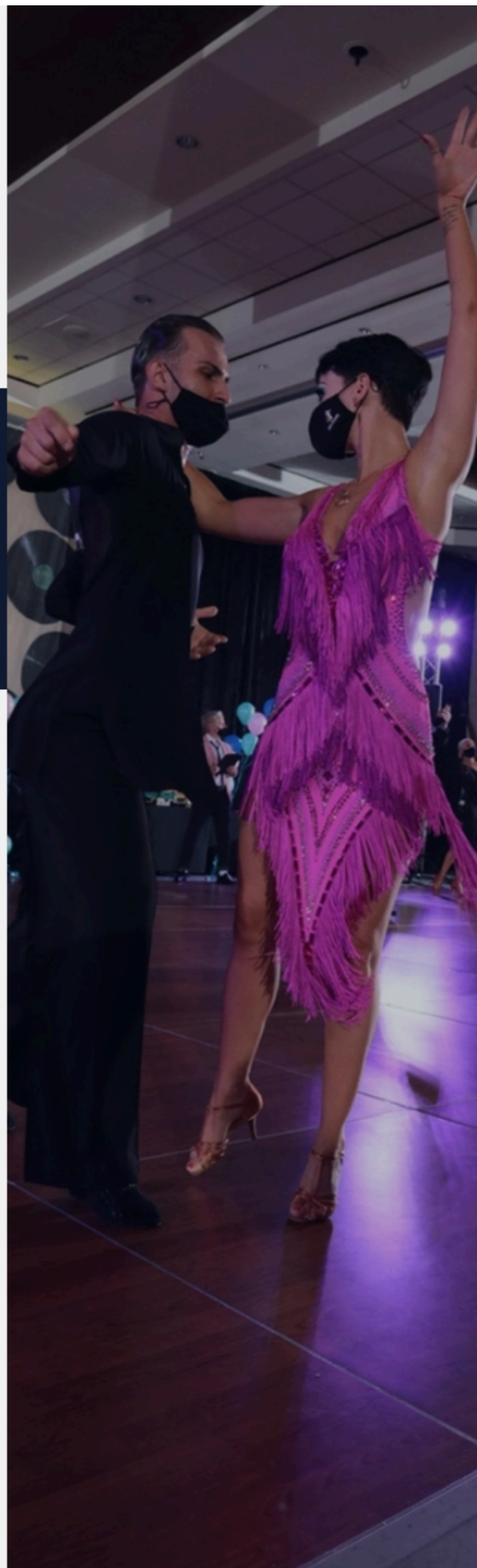
ENTRIES RECEIVED AFTER THE DEADLINE ARE NOT ELIGIBLE FOR STUDIO ENTRY KICKBACK INCENTIVES. CONTINUE TO ADD ENTRIES AND PACKAGES TILL THE END OF THE EVENT FOR TOP STUDIO, TOP TEACHER AND TOP STUDENTS AWARDS. ALL ENTRIES MUST BE RECEIVED BY DATE ABOVE.

PAYMENT DEADLINE: MAY 25, 2021

PAYMENTS MUST BE RECEIVED BY DATE ABOVE TO RECEIVE THE STUDIO INCENTIVE KICKBACK MONIES! INVOICES WILL BE SENT OUT FOR PAYMENT ONCE ENTRIES AND PACKAGES ARE SUBMITTED ONLINE. PLEASE SUBMIT YOUR PAYMENTS AT THE TIME OF ENTRIES VIA QUICKBOOKS INVOICE SENT BY REGIONAL OFFICE. ALL INVOICES ARE TO BE PAID IN FULL BEFORE THE THURSDAY DIRECTORS REGISTRATION.

HOTEL DEADLINE: MAY 15, 2021

HOTEL ROOMS FROM OUR ROOM BLOCK ARE RESERVED ON A "FIRST COME FIRST SERVED BASIS" & BASED ON THE TIME YOUR INFO IS RECEIVED.



**PLEASE MAKE SURE YOU TRIPLE CHECK YOUR INVOICE AND
CONFIRMATION SHEETS ASAP WHEN YOU RECEIVE THEM!**

**CANCELLATION POLICY AND DATE SCHEDULE MUST BE FOLLOWED FOR
THIS EVENT.**

PLEASE MAKE SURE YOUR PACKAGES, PURCHASES, AND ALL ENTRIES ARE CORRECT.

| | | |
|--------------------|--------------|-------------------|
| Mark Adler | 713-898-5061 | Regional Director |
| Stephane Schlueter | 713-898-5061 | Regional Director |
| Erica Hur | 281-924-7641 | Regional Manager |

Please make checks payable to M3 Entertainment.

1925 Hughes Landing Blvd., Suite 400
The Woodlands, Texas 77380

Please email Texas@Fredastaire.com for all a la carte forms.

TEXASFADSCOMPS.COM

Upload all entries to TEXASFADSCOMPS.COM or send to BSEIFERT@FREDASTAIRE.COM

COMPETITION ONLINE PROGRAM ADVERTISING

Artwork Deadline: Friday, June 4, 2021

Any studio or student business is welcome to advertise - Full Page - \$40 - Half Page - \$20.

All Studios should place an ad for all competitors. Artwork for program must be submitted as .jpg before date above.

Please email to Texas@fredastaire.com



FRED ASTAIRE
DANCE STUDIOS.